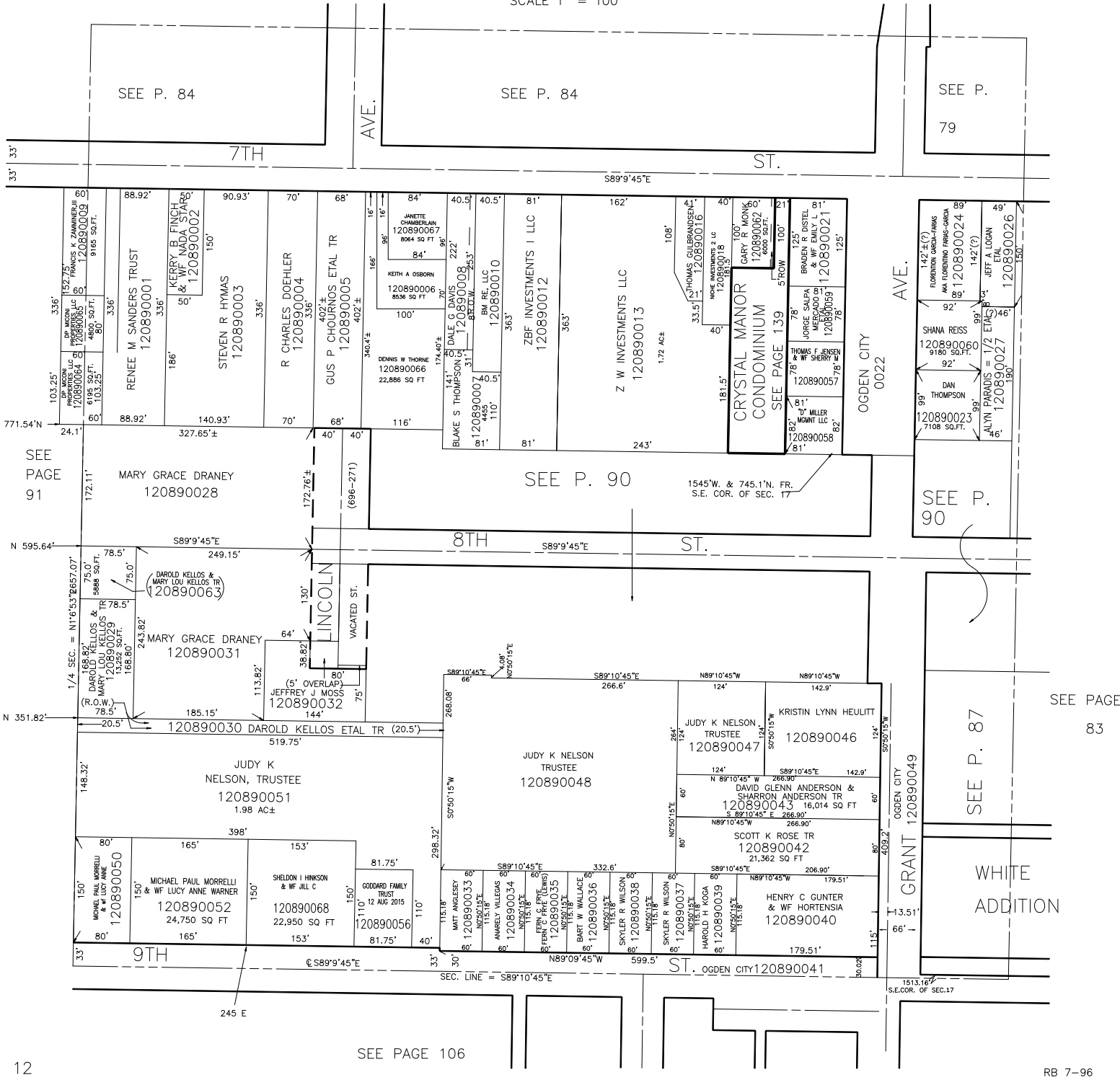


THE S.W. 1/4 OF THE S.E. 1/4 OF
SECTION 17, T.6N.,R.1W., S.L.B.&M.

TAXING UNIT: 25

IN OGDEN CITY
SCALE 1" = 100'



SEE P. 84

SEE P. 84

SEE P.
79

SEE PAGE
91

SEE P. 90

SEE P.
90

SEE PAGE
83

SEE P. 87

WHITE
ADDITION

SEE PAGE 106